

HyFlex Guide: Crestron Controls

The Crestron Touchscreen allows you to power and position your projector and HyFlex camera.

Entering the HyFlex Classroom

Step 1: Power the **Projector ON**

Step 2: Power the **Camera ON**

Step 3: **Select Screen** to focus the camera onto the projector screen or white board.

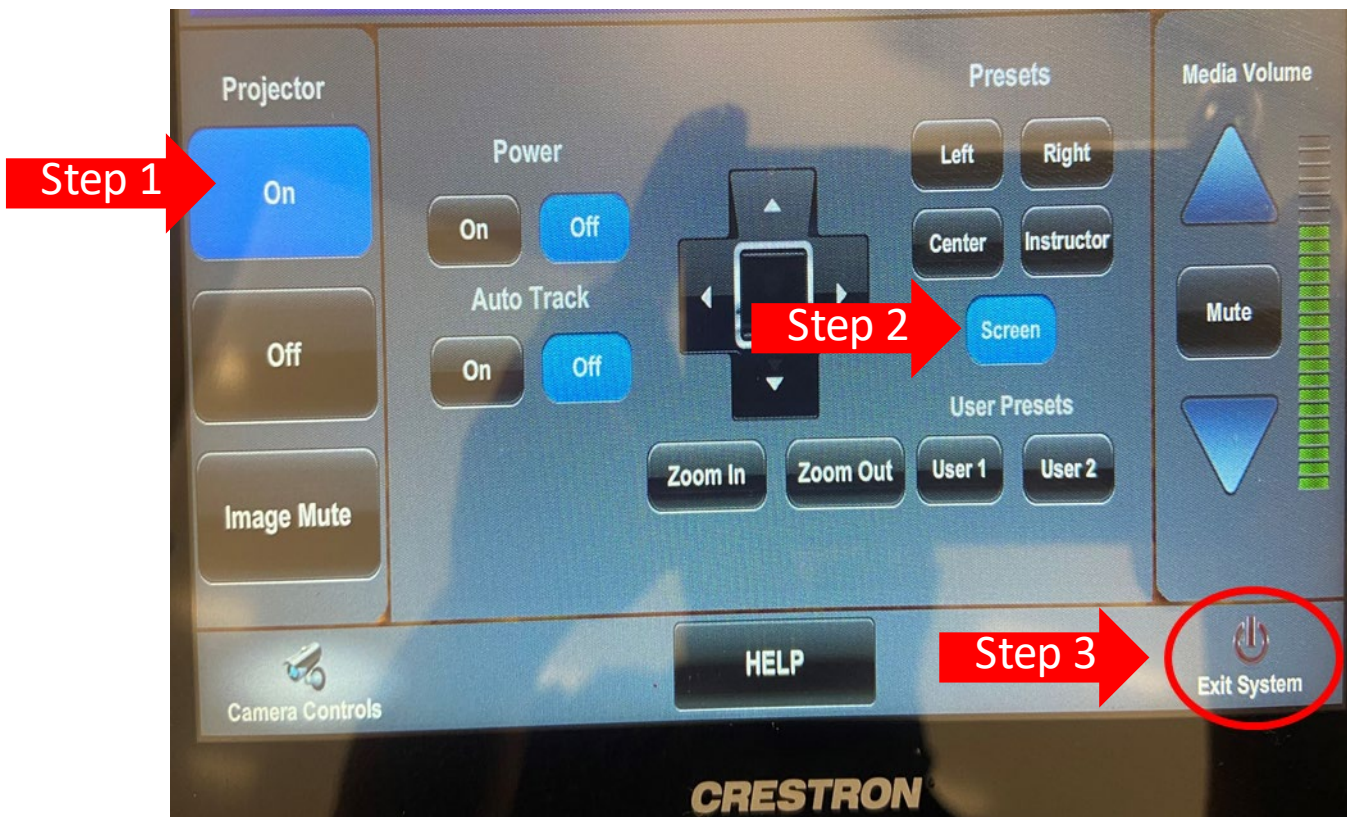


Exiting the HyFlex Classroom

Step 1: Power the **Projector ON**

Step 2: Power the **Camera ON**

Step 3: **Select Screen** to focus the camera onto the projector screen or white board.



HyFlex Guide: Crestron Controls

How to Reposition Classroom Camera & Create Presets

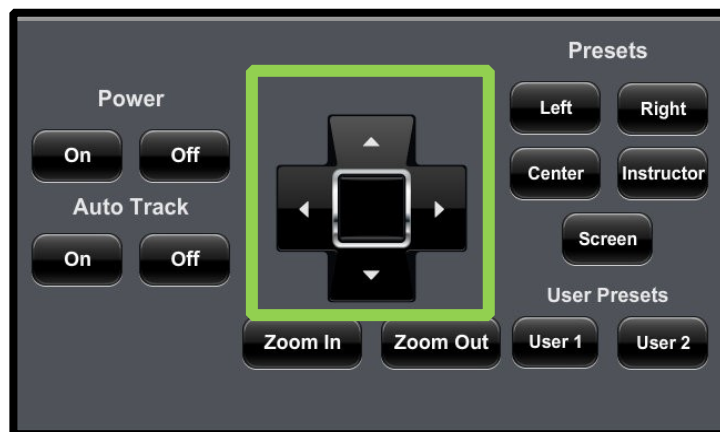
1. Press **Camera Controls** on the Crestron Touchscreen panel (Figure 1).



Figure 1

2. With the Auto Track turned off, you can use the arrows pad on the Crestron screen panel to move and adjust the camera to your preference. Do this by pressing and holding the button down on the touchscreen (Figure 2).

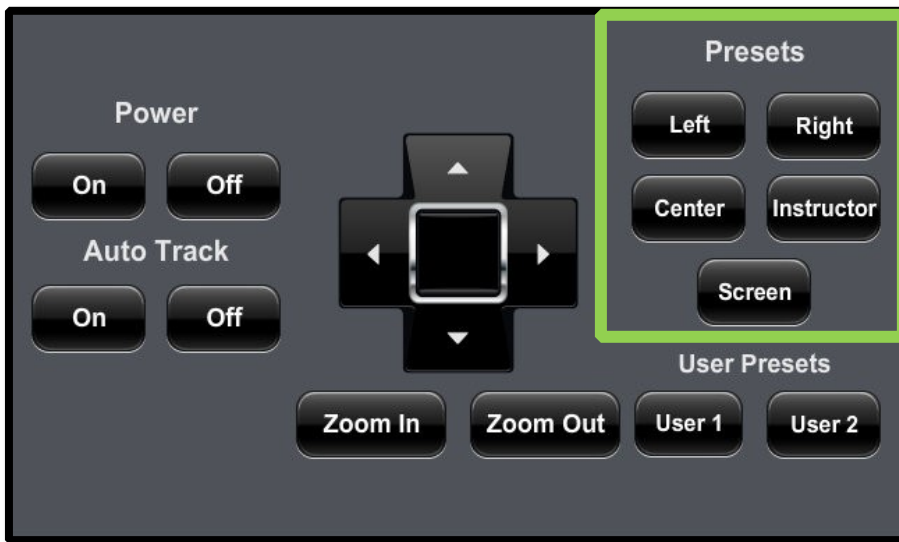
Figure 2



HyFlex Guide: Crestron Controls

- There are also pre-set quadrants: left-right-instructor-screen which can be accessed just by tapping on one of its buttons on the Crestron screen panel (Figure 3). Again, please note that Auto Track must be turned off for you to use presets. “Center,” “left,” and “right” typically refer to the various sections of the white board, while “instructor” focuses the camera on the teaching station and “screen” zooms the camera into the LCD screen, regardless of where that screen is positioned in the classroom. *Note: some specific classrooms might have slightly different options for preset views.*

Figure 3



InstructorPreset



Center Preset

HyFlex Guide: Crestron Controls

- Before beginning a lecture session, one can choose to create User Pre-sets for camera positions. To do this, first position your desired camera position by using the arrow buttons on the Crestron screen panel (Figure 1). Once you have the desired frame you can save it as a pre-set by pressing and holding the **User 1** button on the Crestron screen panel until a message in small red text appears under the User 1 button (Figure 4). This message will read: **User 1 saved**. You may then release the button. The User 1 pre-set is now saved. Please note that because other instructors will be using the Crestron screen panel at different times you will have to reset your User Preset views each time you begin a new live session.

Figure 4

